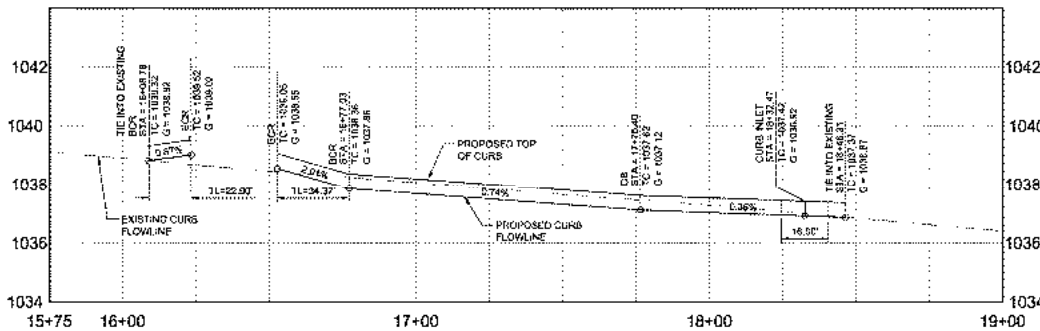


COTTON LANE



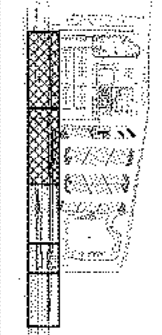
PAVING NOTES:

1. PAVEMENT TO BE CONSTRUCTED PER DETAIL ON SHEET C-02.2 PER CITY OF GOODYEAR SPECIFICATION AND GEOTECHNICAL REPORT REQUIREMENTS.
2. CONSTRUCT 5" VERTICAL CURB AND GUTTER PER MAG STD. DTL. 220-1, TYPE "A".
3. CONSTRUCT 6" VERTICAL CURB AND GUTTER WITH DEPRESSION LIP PER MAG STD. DTL. 220-1 TYPE "A".
4. CONSTRUCT CONCRETE SIDEWALK PER MAG STD. DTL. 230. WIDTHS INDICATED ON PLANS.
5. CONSTRUCT THICKENED EDGE FOR ASPHALT PER MAG STD. DTL. 201 TYPE "A".
6. CONSTRUCT NEW CURB OPENING AND RECONNECT TO EXISTING CATCH BASIN INLET.
7. ADJUST MANHOLE FRAME AND COVER PER MAG STD. DTL. 422 AND 221.
8. ADJUST VALVE BOXES, METER BOXES, FRAMES AND COVER PER MAG STD. DTL. 273.
9. CONSTRUCT 10" WIDE VALLEY GUTTER PER COG STD. DTL. G-3226.
10. INSTALL TELECOMMUNICATION AND TRAFFIC SIGNAL INTERCONNECT IN PUC PER COG STD. DTL. G-3132. REFERENCE STREET LIGHT PLANS FOR CONDUIT ROUTING.
11. CONSTRUCT DRIVEWAY ENTRANCE PER COG STD. DTL. G-3230, TYPE D-3.
12. INSTALL DRIVEWAY ENTRANCE PER COG STD. DTL. G-3236, TYPE D-4.
13. CONSTRUCT SIDEWALK RAMP PER MAG STD. DTL. 237-2.
14. CONSTRUCT 10" CLASS "A" CONCRETE WITHIN RIGHT TURN LANE, SLOPES PER PLAN.
15. CONSTRUCT BULL NOSE PER COG STD. DTL. G-3211. SEE TURN BAY MEDIAN NOSE.
16. CONSTRUCT BULL NOSE PER COG STD. DTL. G-3211. SEE FULL WIDTH MEDIAN NOSE.

NOTE:

1. EXISTING CONDITIONS HAVE BEEN TAKEN FROM THE BEST AVAILABLE INFORMATION. CONTRACTOR SHALL VERIFY EXISTING CONDITIONS AND NOTIFY THE ENGINEER IF DISCREPANCIES ARE IDENTIFIED.
2. REFERENCE STREET LIGHT PLANS BY XXXXX FOR ALL STREET LIGHT LOCATIONS, CONDUIT, AND WIRE RUNS.

- City Sidewalk MAG 230 - OFF SITE - 4,495 SF
- Curb & Gutter per MAG 2201A - OFF SITE - 232 LF
- Truncated Domes (2' Wide) - OFF SITE - 16 LF
- Valley Gutter COG G-3226 - OFF SITE - 540 SF
- H/C Ramp Curb - OFF SITE - 42 LF
- Handicap Ramps MAG 237-2 - OFF SITE - 176 SF
- 9" Decel Lane - OFF SITE - 2,759 SF



OFFSITE PLANS SCHEMATIC DESIGN



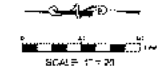
AFUHS TRANSPORTATION CENTER

COTTON LANE
GOODYEAR, AZ

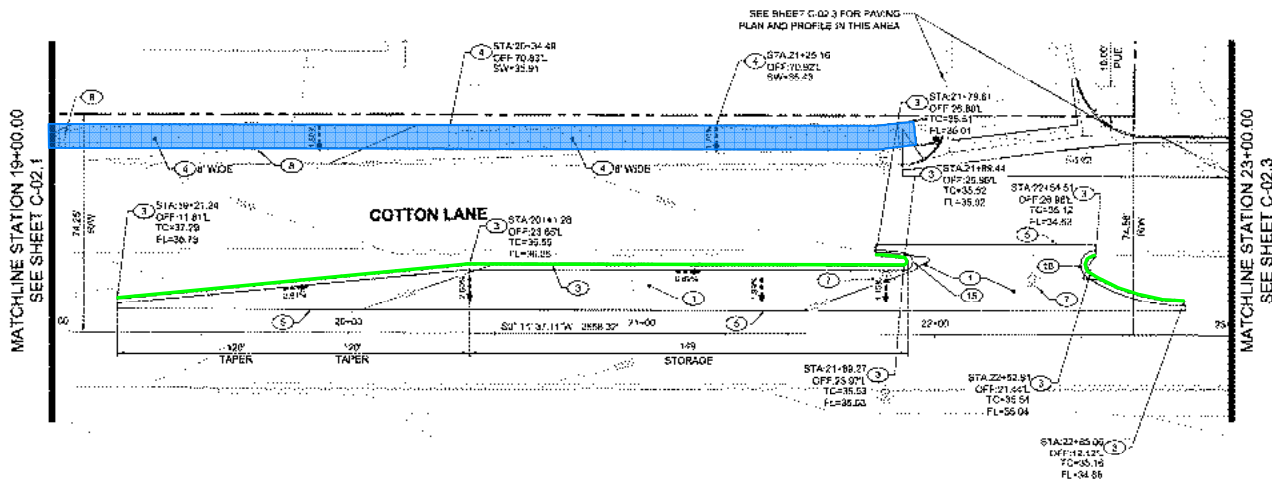
DESIGNED BY: SAW
DATE: SEPTEMBER 6, 2021
DRAWN BY: SAW
PROJECT: 21-100
SCALE: 1" = 20'

PAVING PLAN AND PROFILE

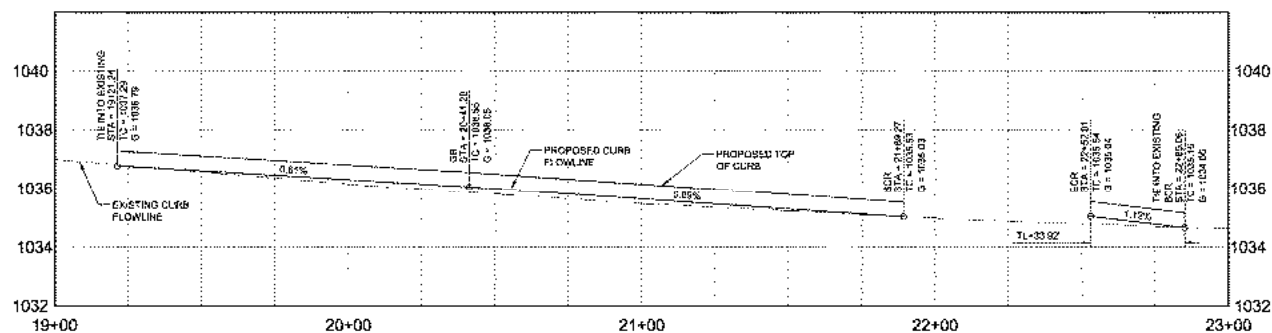
UNIC NO
C-02.1



- City Sidewalk MAG 230 - OFF SITE - 2,395 SF
- Curb & Gutter per MAG 2201A - OFF SITE - 324 LF



COTTON LANE

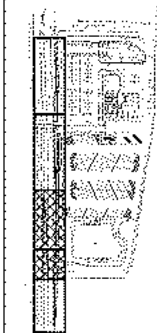


PAVING NOTES:

1. PAVEMENT TO BE CONSTRUCTED PER DETAIL ON SHEET C-02.2 PER CITY OF GOODYEAR SPECIFICATION AND GEOTECHNICAL REPORT REQUIREMENTS.
2. CONSTRUCT 6" VERTICAL CURB AND GUTTER PER MAG STD. DTL. 220-1, TYPE "A".
3. CONSTRUCT 6" VERTICAL CURB AND GUTTER WITH DEPRESSION UP PER MAG STD. DTL. 220-1 TYPE "A".
4. CONSTRUCT CONCRETE SIDEWALK PER MAG STD. DTL. 230. WIDTH AS INDICATED ON PLANS.
5. CONSTRUCT THICKENED EDGE FOR ASPHALT PER MAG STD. DTL. 201 TYPE "A".
6. CONSTRUCT NEW CURB OPENING AND RECONNECT TO EXISTING CATCH BASIN INLET.
7. ADJUST MANHOLE FRAME AND COVER PER MAG STD. DTL. 422 AND 224.
8. ADJUST VALVE BOXES, METER BOXES, FRAMES AND COVER PER MAG STD. DTL. 273.
9. CONSTRUCT 8" WIDE VALLEY GUTTER PER COG STD. DTL. G-3236.
10. INSTALL TELECOMMUNICATION AND TRAFFIC SIGNAL INTERCONNECT IN PUE PER COG STD. DTL. G-3132. REFERENCE STREET LIGHT PLANS FOR CONDUIT ROUTING.
11. CONSTRUCT DRIVEWAY ENTRANCE PER COG STD. DTL. G-3236, TYPE D-3.
12. INSTALL DRIVEWAY ENTRANCE PER COG STD. DTL. G-3236 TYPE D-4.
13. CONSTRUCT SIDEWALK RAMP PER MAG STD. DTL. 237-2.
14. CONSTRUCT 9" CLASS "A" CONCRETE WITH RIGID TURN LANE, SLOPES PER PLAN.
15. CONSTRUCT BULL NOSE PER COG STD. DTL. G-3211. SEE TURN BAY MEDIAN NOSE.
16. CONSTRUCT BULL NOSE PER COG STD. DTL. G-3211. SEE FULL WIDTH MEDIAN NOSE.

NOTE:

1. EXISTING CONDITIONS HAVE BEEN TAKEN FROM THE BEST AVAILABLE INFORMATION. CONTRACTOR SHALL VERIFY EXISTING CONDITIONS AND NOTIFY THE ENGINEER IF DISCREPANCIES ARE IDENTIFIED.
2. REFERENCE STREET LIGHT PLANS BY XXXX FOR ALL STREET LIGHT LOCATIONS, CONDUIT, AND WIRE RUNS.



OFFSITE PLANS SCHEMATIC DESIGN



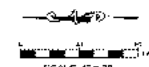
AFUHSU TRANSPORTATION CENTER

COTTON LANE
08/03/2021

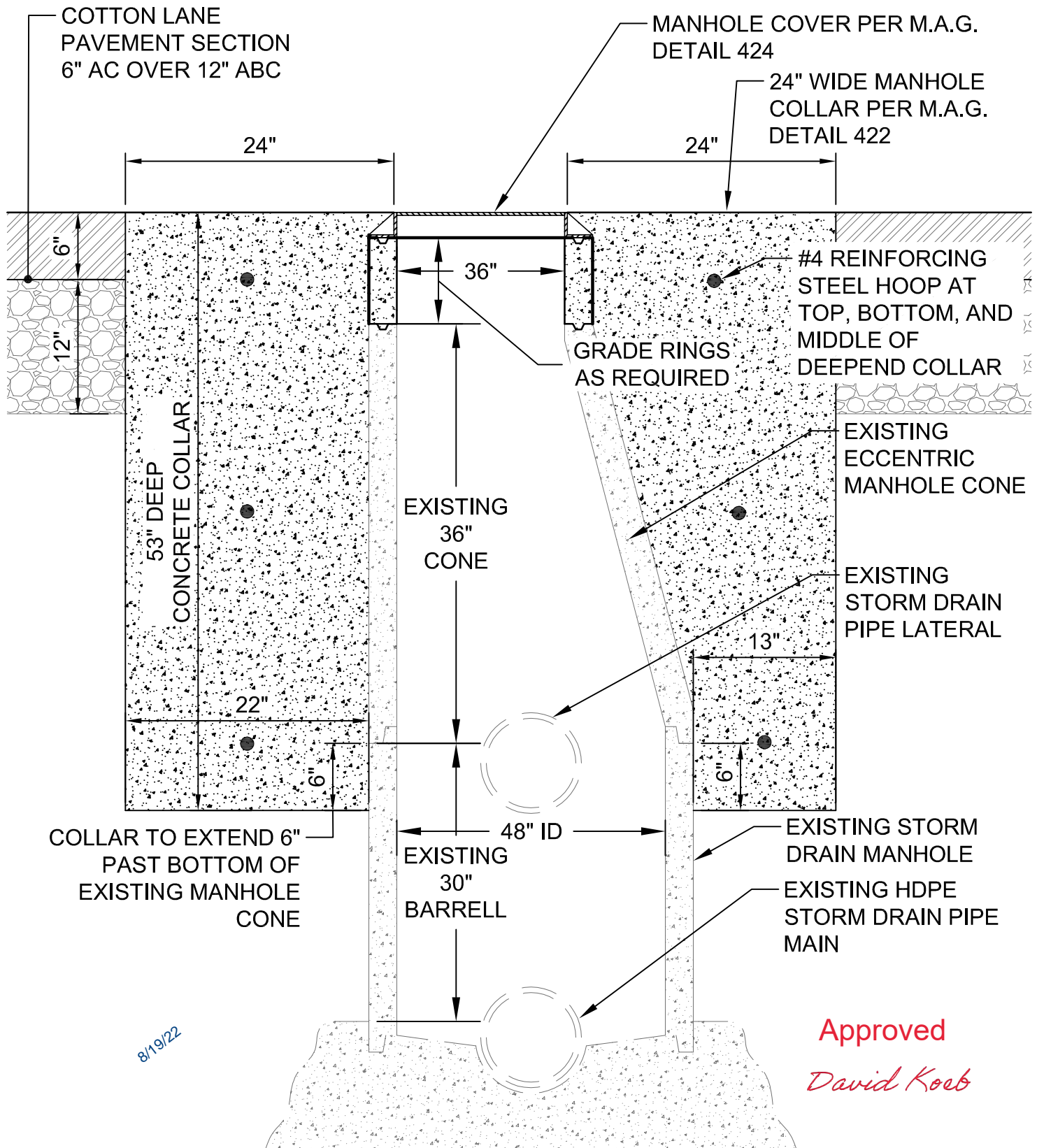
DESIGNED BY: SAW
DATE: SEPTEMBER 6, 2021
DRAWN BY: SAW
PROJ: 21-102
SCALE: 1" = 20'

PAVING PLAN AND PROFILE

UNO: 001
C-02.2



MODIFIED EXISTING MANHOLE EXHIBIT OPTION 4



| | A | B | C | D | E | F | G | H | I |
|----|---|------------------------------------|----------|-----------|------------|---|---------------|-------|---|
| 1 | Item # | Item Name | Quantity | Ext Price | Price | U | Ext Labor | Labor | U |
| 2 | Label Set: Combined, Combined, Combined, Combined, Combined | | | | | | <u>246.59</u> | | |
| 3 | Schedule Code: 173-PVC Conduit Installation | | | | | | <u>40.85</u> | | |
| 4 | 5,278 | 1 PVC 40 | 750.00 | | \$201.83 | C | 30.00 | 4.00 | C |
| 5 | 5,315 | 1 PVC 40 90 ELBOW | 16.00 | | \$1.33 | E | 4.00 | 0.25 | E |
| 6 | 5,740 | 1 PVC MALE TERM | 10.00 | | \$55.50 | C | 1.80 | 0.18 | E |
| 7 | 5,766 | 1 PVC COUPLING | 25.00 | | \$36.05 | C | 5.05 | 20.20 | C |
| 8 | Schedule Code: 171-Excavation & Backfill | | | | | | <u>104.30</u> | | |
| 9 | 20,666 | 12X24 TRENCH QUOTED W/STANDBY TIME | 700.00 | | \$0.00 | Q | 48.30 | 6.90 | C |
| 10 | 20,723 | 12X24 BACKFILL-COMPACT | 700.00 | | \$0.00 | X | 56.00 | 8.00 | C |
| 11 | Schedule Code: 161-Fixtures | | | | | | <u>76.00</u> | | |
| 12 | 15,339 | LED AST1 AREA/ROADWAY FIXTURE | 16.00 | | \$0.00 | Q | 40.00 | 2.50 | E |
| 13 | 15,745 | 25' STL/ALUM STREET LITE POLE | 8.00 | | \$0.00 | Q | 36.00 | 4.50 | E |
| 14 | Schedule Code: 141-Grounding | | | | | | <u>25.44</u> | | |
| 15 | 121 | 6 BARE CU SOLID | 360.00 | | \$1,135.35 | M | 4.32 | 12.00 | M |
| 16 | 19,490 | 3/4" X 10' GRND ROD,CU | 8.00 | | \$18.19 | E | 16.00 | 2.00 | E |
| 17 | 19,529 | 1/2" - 1" X 2 GROUND CLAMP | 8.00 | | \$994.83 | C | 5.12 | 0.64 | E |
| 18 | | | | | | | <u>246.59</u> | | |

Added Streetlight and Boring Scope

| | A | B | C | D | E | F | G | H | I |
|----|---|----------------------------------|----------|-----------|----------|---|---------------|-------|---|
| 1 | Item # | Item Name | Quantity | Ext Price | Price | U | Ext Labor | Labor | U |
| 2 | Label Set: Combined, Combined, Combined, Combined, Combined | | | | | | <u>116.20</u> | | |
| 3 | Schedule Code: 161-Fixtures | | | | | | <u>22.50</u> | | |
| 4 | 15,288 | LED 79W VAP DAMP ASY SURF FIXTUR | 15.00 | | \$0.00 | Q | 22.50 | 1.50 | E |
| 5 | Schedule Code: 111-Branch Conduit | | | | | | <u>93.70</u> | | |
| 6 | 1,071 | 1 EMT | 800.00 | | \$199.00 | C | 44.00 | 5.50 | C |
| 7 | 1,212 | 1 EMT CONN S/C/I | 30.00 | | \$678.17 | C | 10.50 | 0.35 | E |
| 8 | 1,260 | 1 EMT COUPL S/C | 80.00 | | \$628.63 | C | 28.00 | 0.35 | E |
| 9 | 1,392 | 1 EMT CHNL STRAP W/BOLT | 80.00 | | \$95.70 | C | 2.40 | 3.00 | C |
| 10 | 18,617 | 1G BELL 5324-0 BOX 3HUBS 3/4" | 8.00 | | \$854.74 | C | 8.80 | 1.10 | E |
| 11 | Schedule Code: Fixtures | | | | | | <u>0.00</u> | | |
| 12 | 100,022 | FIXTURE CS1 | 15.00 | | \$0.00 | Q | 0.00 | 0.00 | X |
| 13 | | | | | | | <u>116.20</u> | | |

Added Streetlight and Boring Scope



1. FIRE RISER.
2. FIRE DEPARTMENT CONNECTION.
3. KNOX BOX.
4. DUAL HEIGHT, GOOSE NECK ACCESS CONTROL PEDESTAL WITH ACCESS CONTROL MOUNTED AT APPROXIMATELY (42) INCHES ABOVE GRADE WITH SECOND ACCESS CONTROL AND KNOX SWITCH MOUNTED AT APPROXIMATELY (66) INCHES ABOVE GRADE. POST TO BE A MINIMUM OF 10'-0" AWAY FROM THE GATE.
5. BUILDING ADDRESS SIGNAGE. SEE EXTERIOR ELEVATIONS.
6. TURN RADIUS SYMBOLS INDICATING COMPLIANCE WITH (28) FOOT INSIDE AND (48) FOOT OUTSIDE RADIUS. TYPICAL.

- A. ALL OF THIS SITE WILL CONFORM WITH ALL APPLICABLE BUILDING CODES.
- B. ALL NEW OR RELOCATED UTILITIES WILL BE PLACED UNDERGROUND.
- C. ALL BUILDINGS SHALL BE SPARKLE, ALARMED AND MONITORED.
- D. ALL BUILDINGS SHALL HAVE RISER ROOMS WITH EXTERIOR DOOR ACCESS.
- E. PER IFC 105.6.1, AN OPERATIONAL PERMIT FROM THE FIRE DEPARTMENT IS REQUIRED FOR FOR
FLAMMABLE/COMBUSTIBLE LIQUID QUANTITIES IS
EITHER FIVE (5) GALLONS INSIDE OR FIVE (10) GALLONS
OUTSIDE. HAZARDOUS MATERIAL INVENTORY STATEMENT
(HIMS) IS TO BE SUBMITTED WITH PLANS FOR OPERATION
PERMIT.
- F. PER IFC 200.3.3, AN OPERATIONAL PERMIT FROM THE FIRE
DEPARTMENT IS REQUIRED FOR FOR MOTOR FUEL
DISPENSING FACILITIES.
- G. PER IFC 200.3.3.1-20.3.3.1-20.3.3.3, NEW NON-COMBUSTIBLE RESIDENTIAL
CARPORTS AND COMMERCIAL COVERED PARKING THAT EXCEED
TWO THOUSAND (2,000) SQUARE FEET SHALL HAVE AN
AUTOMATIC FIRE SPRINKLER SYSTEM INSTALLED. CARPORTS OR
COVERED PARKING THAT IS LESS THAN TWO THOUSAND (2,000)
SQUARE FEET ARE TO BE SEPARATED BY A MINIMUM OF TEN (10)
FEET. IF THE AUTOMATIC FIRE SPRINKLER SYSTEM IS TO
BE INSTALLED, IF A CANOPY IS PLACED OVER THE FUEL DISPENSING
AREA, FIRE PROTECTION MAY BE REQUIRED.
- H. PER IFC 105.6.1(7), WHERE BUILDINGS OR STRUCTURES ARE TO
HAVE HIGH PILED STORAGE (GREATER THAN TEN FEET HIGH AND
500 SQ. FEET), BOTH ONGOING OPERATIONAL PERMITS AND
PERMITS TO CONSTRUCT A HIGH PILED STORAGE AREA ARE
REQUIRED. THE APPROPRIATE INFORMATION IS TO BE SUBMITTED
TO THE FIRE DEPARTMENT FOR REVIEW AND APPROVAL.
- I. PER IFC 200.3.3, ALL BUILDINGS ARE TO BE REQUIRED TO HAVE A
FIRE ALARM SYSTEM IN PLACE TO MONITOR THE AUTOMATIC
FIRE SPRINKLER SYSTEM IN THE BUILDING AND REPORT ANY
ALARMS, SUPERVISORY, OR TROUBLE CONDITIONS TO AN
APPROVED CENTRAL STATION.
- J. PER IFC 200.3.3, WHERE BUILDINGS OR STRUCTURES ARE TO
HAVE HIGH PILED STORAGE, THE FOLLOWING CONSTRUCTION
INFORMATION IS TO BE SUBMITTED FOR REVIEW AND APPROVAL.

- FLOOR PLAN OF THE BUILDING SHOWING LOCATIONS AND DIMENSIONS OF HIGH-PILED STORAGE AREAS.
 - USABLE STORAGE HEIGHT FOR EACH STORAGE AREA.
 - NUMBER OF TIERS WITHIN EACH RACK, IF APPLICABLE.
 - COMMODITY CLEARANCE BETWEEN TOP OF STORAGE AND SPRINKLER DEFLECTOR FOR EACH STORAGE ARRANGEMENT.
 - AISLE DIMENSIONS BETWEEN EACH STORAGE ARRAY.
 - MAXIMUM PILE VOLUME FOR EACH STORAGE ARRAY.
 - LOCATION AND CLASSIFICATION OF COMMODITIES IN ACCORDANCE WITH SECTION 3203.
 - LOCATION OF COMMODITIES THAT ARE BANNED OR ENCAPSULATED.
 - LOCATION OF REQUIRED FIRE DEPARTMENT ACCESS DOORS.
 - TYPE OF FIRE SUPPRESSION AND FIRE DETECTION SYSTEMS.
 - LOCATION OF VALVES CONTROLLING THE WATER SUPPLY OF CEILING AND IN-RACK SPRINKLERS.
 - TYPE, LOCATION AND SPECIFICATIONS OF SMOKE REMOVAL AND CURTAIN BOARD SYSTEMS.
- DIMENSION AND LOCATION OF TRANSVERSE AND LONGITUDINAL FLUJ STAYS.
- ADDITIONAL INFORMATION REGARDING REQUIRED DESIGN FEATURES, COMMODITIES, STORAGE ARRANGEMENT AND FIRE PROTECTION FEATURES WITHIN THE HIGH-PILED STORAGE AREA SHALL BE PROVIDED AT THE TIME OF PERMIT, WHERE REQUIRED BY THE FIRE CODE OFFICIAL.
- PER IFC 3206.7, WHERE BUILDINGS OR STRUCTURES ARE TO HAVE HIGH-PILED STORAGE, FIRE DEPARTMENT ACCESS DOORS ARE TO BE PROVIDED PER THE REQUIREMENTS OF TABLE 2006.2 AND SECTION 3206.7 (125 FEET MAXIMUM BETWEEN DOORS).

PROJECT DESCRIPTION:
NEW SUPPORT SERVICES FACILITY FOR AGUA FRIA UNION
HIGH SCHOOL DISTRICT. ON ROUGH GRADED SITE WITH
EXISTING RIGHT-OF-WAY IMPROVEMENTS.
THE NEW FACILITY WILL INCLUDE ADMINISTRATIVE OFFICE
FOR THE SCHOOL DISTRICT'S TRANSPORTATION
ADMINISTRATION, AS WELL AS SERVICE BAYS FOR PARKING,
REPAIR, AND MAINTENANCE OF THE SCHOOL DISTRICT'S BUS
AND WHITE FLEET VEHICLES. THE FACILITY WILL ALSO HAVE A
NEW MAIN WAREHOUSE AND DISTRIBUTION FOR THE
SCHOOL DISTRICT.

| OCCUPANCY | AREA |
|--------------|------------------|
| A-2 | 1,790 SF |
| B | 3,729 SF |
| S-1 | 12,034 SF |
| EAST CANOPY | 970 SF |
| SOUTH CANOPY | 950 SF |
| WEST CANOPY | 840 SF |
| TOTAL | 20,313 SF |

THIS PROPERTY IS OWNED AND OPERATED BY THE AGUA FRIA UNION HIGH SCHOOL DISTRICT AS A SUPPORT FACILITY USED SOLELY BY THE SCHOOL DISTRICT. AS SUCH IT IS CONSIDERED PUBLIC SCHOOL GROUNDS, WITH THE SAME ZONING EXEMPTION CONSIDERATIONS THAT APPLY TO A SCHOOL CAMPUS OR NON-REVENUE GENERATING SCHOOL DISTRICT FACILITY.

THE EXISTING FIRST PARK DEVELOPMENT IS FOCUSED ON INDUSTRIAL AND WAREHOUSE USES. ALTHOUGH SCHOOL DISTRICT FACILITIES ARE NOT SUBJECT TO RESTRICTIONS IN ANY ZONING TYPE, THE WAREHOUSE, ADMINISTRATION AND FLEET SERVICES ACTIVITIES OF THIS SITE ARE CONSISTENT WITH THE OVERALL ACTIVITIES OF THE FIRST PARK DEVELOPMENT. THE IS FACILITY WILL BE OCCUPIED BY ADULT STAFF AND NOT BE UTILIZED BY CHILDREN, AND WILL NOT BE AFFECTED BY ANY CURRENT ADJACENT USES, OR RESTRICT ANY FUTURE PLANNED ADJACENT USES IN THE DEVELOPMENT.

APPLICANT: AGUA FRIA UNION HIGH SCHOOL DISTRICT
1481 NORTH ELISEO FELIX JR. WAY
AVONDALE, AZ 85523

APPLICANT CONTACT:
MIKE SHEPARD
EXECUTIVE DIRECTOR OF SUPPORT SERVICES
623.932.7154
MSHEPARD@AGUAFRIA.ORG

ARCHITECT CONTACT:
BRENT HEATON
PROJECT MANAGER
480.991.0800
BRENT@SPPLUSARCHITECTS.COM

APN #:
ZONING:
PROPOSED USE:

501-01-006V
P42
DISTRICT TRANSPORTATION MAINTENANCE,
TRANSPORTATION ADMINISTRATION OFFICE
AND SUPPORT SERVICES WAREHOUSE

CONSTRUCTION TYPE: II-B, SPRINKLERED

SITE AREA: ±8.59 AC (374.018 SF)

[illegible]

HATCH DENOTES 20'-0" WIDE FIRE
LANE ROUTE THROUGH SITE

TRANSPORTATION FACILITY

AGUA FRIA UNION HIGH SCHOOL DISTRICT
COTTON LANE, SOUTH OF THOMAS ROAD
GOODYEAR, AZ 85395

FIRE ACCESS SITE PLAN

CONSTRUCTION SET 5/27/2022

SPS+
ARCHITECTS
SPS+ ARCHITECTS LLP
8681 E. VIA DE NEGOCIO
TUICSON, AZ 85745
SCOTTSDALE, AZ 85258
480.497.4200
480.497.4203

THIS DRAWING IS AN INSTRUMENT OF SERVICE & IS THE PROPERTY OF PS+ARCHITECTS LLP & MAY NOT BE REPRODUCED OR REPRODUCTION HEREOF USED WITHOUT WRITTEN PERMISSION.

| REVISIONS | | |
|-----------|------------|-------------|
| REV# | DATE | DESCRIPTION |
| 1 | 02.14.2022 | OWNER CHAN |
| 2 | 02.14.2022 | CITY COMM |
| 7 | 05.13.2022 | COORDINATIO |

REVIEWED BY: _____
DRAWN BY: _____ BA



ORIGINAL ISSUE
DATE: 03/30/202

JOB No: 2100

SHEET:

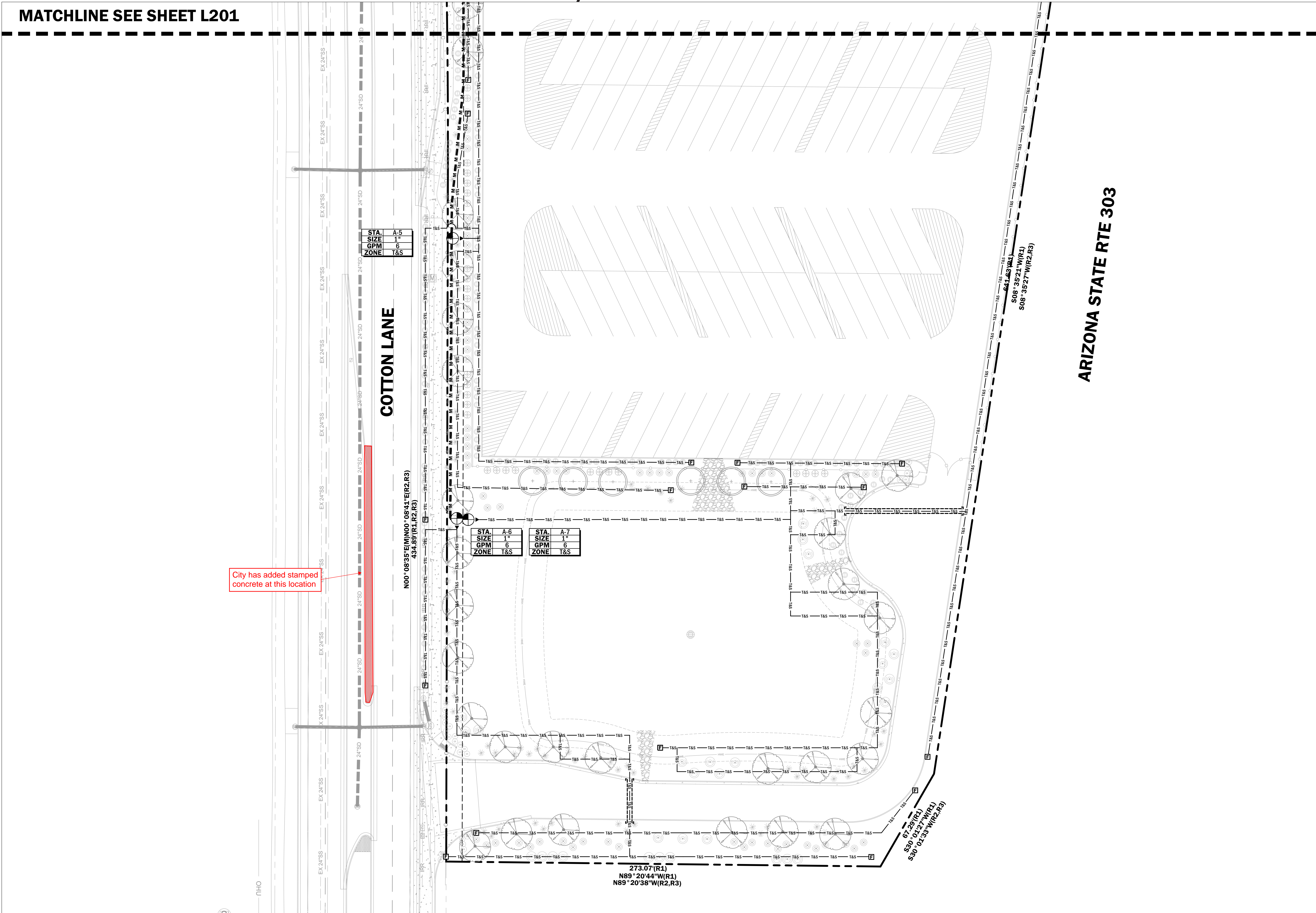
SP101

SEQUENCE #:

PATH: C:\Users\Andrew.SP5+ Architects\SP5+ Architects Team Site - Online J Drive\2021\21005 Agua Fria UHSD Transportation\00 REVIT\02 CAD\06 SHEETS\SP101-FIRE ACCESS SITE PLAN.dwg LAST SAVED BY: ANDREW DATE: 5/13/22

B:\18_C\Users\craig\Documents\Crowley LLC\Projects\2021\Projects\2021-AFUHSD-TRANSPORTATION\SPS-6-1202.dwg
LAST SAVED BY: CRAIG DATE: 12/21/22

MATCHLINE SEE SHEET L201



City has added stamped concrete at this location

NOT
USED

LEGEND

| | |
|--|--|
| | PROPERTY LINE |
| | EASEMENT LINE |
| | SETBACK LINE |
| | EXISTING CONTOUR LINE |
| | PROPOSED CONTOUR LINE |
| | MATCHLINE |
| | FIRE HYDRANT WITH 7' CLEARANCE SEE CIVIL ENG. PLANS |

SLEEVE SIZE SCH.

| SIZE (PIPE) | SLEEVE SIZE |
|-------------|-------------|
| 1" | 3" |
| 1 1/4" | 3" |
| 1 1/2" | 4" |
| 2" | 4" |
| 2 1/2" | 6" |
| 3" | 6" |
| 4" | 8" |
| 6" | 8" |

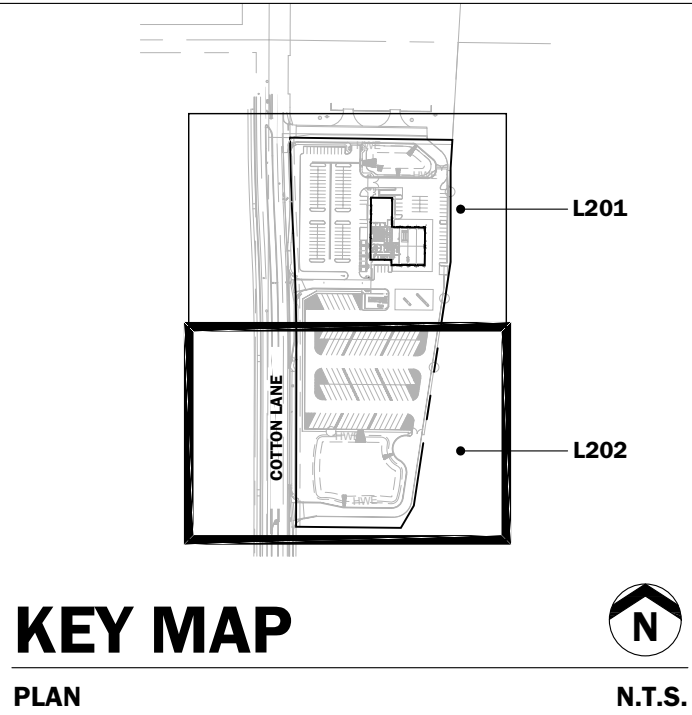
- ALL SLEEVES SHALL BE SCHEDULE 40 PVC
- SLEEVE SIZE IS FOR SINGLE PIPE RUNS. PIPE SIZE SHALL ALWAYS BE TWICE THE DIAMETER OF THE LINE SIZE(S) RUNNING THROUGH IT.
- SLEEVE ALL WIRE SEPARATELY FROM WATER LINES, UNDER PAVING.
- ALL SOLVENT WELD MAINLINE FITTINGS SHALL BE SCHEDULE 80
- SEE DETAIL 7/L203 FOR MORE INFO

PIPE SIZE SCHEDULE

| SIZE (PIPE) | GPM |
|-------------|----------|
| 1/2" | 0 - 5 |
| 3/4" | 6 - 10 |
| 1" | 11 - 15 |
| 1 1/4" | 16 - 20 |
| 1 1/2" | 21 - 30 |
| 2" | 31 - 50 |
| 2 1/2" | 51 - 70 |
| 3" | 71 - 100 |

KEYED NOTES

- I.X IRRIGATION PLANS
- I.1 NEW 1" SERVICE LINE, SEE CIVIL ENG. PLANS
- I.2 1" RPBP, SEE IRRIGATION SCHEDULE
- I.3 CONTROLLER, WALL MOUNT, IN LOCKED BOX LOCATED IN UTILITY ROOM INSIDE CLUBHOUSE COORDINATE WITH OWNER ON EXACT PLACEMENT, SEE ELECTRICAL PLANS FOR POWER. COORDINATE WITH GENERAL CONTRACTOR.



SCALE

SCALE: 1" = 30'-0"

STAKE IT

ARIZONA BLUE STAKE

CALL TWO WORKING DAYS BEFORE YOU DIG

602-263-1100
1-800-STAKE IT
OUTSIDE MARICOPA COUNTY

THOMAS + CROWLEY

LANDSCAPE ARCHITECTURE
+ PLANNING
+ SITE DESIGN
+ CONSTRUCTION MANAGEMENT

1150 N. COUNTRY CLUB DRIVE, #11
MESA, AZ 85201
PH: 480.878.4708
WWW.THOMAS-CROWLEY.COM
TIC #05-#22104

IRRIGATION LEGEND & SCHEDULE

| SYMBOL | DESCRIPTION MANUFACTURER / MODEL | SIZE |
|--------|---|--------------------|
| | METER SEE CIVIL PLANS | 1" |
| | RPBP FEBCO 825 YA SEE DETAIL 1/L203 - PROVIDE GUARD SHACK ENCLOSURE SEE DETAIL 2/L203 | 1" |
| | MASTER VALVE & FLOW SENSOR HUNTER: PGV VALVE WITH HUNTER FLOW-SYNC SENSOR SEE DETAIL 3/L203 | 1" |
| | ISOLATION VALVE GRISWOLD MODEL #2160 SEE DETAIL 4/L203 | MATCH PIPE SIZE |
| | CONTROLLER HUNTER-ICC2-SS 120-800-SS ICC-PED-SS SEE DETAIL 5/L203 | 8 STATIONS |

| PIPE | DESCRIPTION MANUFACTURER / MODEL | SIZE |
|-----------|-------------------------------------|-------------------------------------|
| | SLEEVE SCH. 40 PVC | SEE SLEEVE SCHEDULE THIS PAGE |
| | MAINLINE SCH 40 PVC SOLVENT WELD | 1 1/2" |
| | DRIP LINE TREES CLASS 200 PVC | 3/4" |
| | DRIP LINE SHRUBS CLASS 200 PVC | 3/4" |
| NOT SHOWN | 1/4" MICRO TUBING | 1/4" |

- NOTE:
- ALL PVC PIPE SHALL BE CRESLINE (O.E.)
 - POLY DRIP TUBING SHALL BE AG PRODUCTS (O.E.)
 - SEE DETAIL 6/L203 FOR ALL PIPE DEPTHS

| DRIP IRRIGATION | DESCRIPTION MANUFACTURER / MODEL | SIZE |
|-----------------|--|--------------------------------------|
| | ELECTRIC REMOTE VALVE HUNTER: PGV-101G - WITH REGULATOR, BALL VALVE AND FILTER (SEE BELOW) - SEE DETAIL 8/L203 | SEE PLAN |
| | BALL VALVE SPEARS (O.E.) | MATCH VALVE |
| | PRESSURE REGULATOR SENNINGER (O.E.) - 30 PSI | 1" x 3/4" |
| | FILTER AG PRODUCTS (O.E.) - 150 MESH PLASTIC Y FILTER | 3/4" |
| NOT SHOWN | EMITTERS RAIN BIRD: XERI BUG SEE DETAILS 10&11/L203 | SEE EMITTER SCHEDULE THIS PAGE |
| | FLUSH VALVE 3/4" BALL VALVE WITH TWIST OFF CAP IN 6" ROUND VALVE BOX SEE DETAIL 9/L203 | SEE PLAN |

| STA. | C-X | CONTROLLER | TYPICAL |
|------|--------|------------|---------------|
| SIZE | 1" | STATION | ZONE CALLOUTS |
| GPM | 15 | VALVE SIZE | TREES IN TURF |
| ZONE | SHRUBS | GPM | DRIP |
| | | ZONE | TURF |

EMITTER SCHEDULE

| CANOPY | PLANT SIZE | GPH | EMITTERS |
|---------|------------|-----|------------------|
| 2' | 1 GAL. | 1 | (1) XBT-10-6 - 1 |
| 2'-4' | 5 GAL. | 1 | (1) XBT-10-6 - 1 |
| 4' | 15 GAL. | 6 | (1) XBT-20-6 - 3 |
| 6'-8' | 24" BOX | 6 | (1) XBT-20-6 - 3 |
| 8'-10' | 36" BOX | 12 | (2) XBT-20-6 - 6 |
| 10'-12' | 48" BOX | 12 | (2) XBT-20-6 - 6 |

1. PROVIDE THE NUMBER OF EMITTERS SHOWN IN BRACKETS
2. (1) XBT-10-6 CAN SERVE UP TO 6 SHRUBS/ GROUND COVER OR CACTI. CONTRACTOR SHALL RUN EMITTER LINES FROM ALL SIX PORTS AS SHOWN ON THE "SHRUB EMITTER SPACING DIAGRAM DETAIL" ON SHEET L203. EMITTER LINES NOT USED SHALL BE PLUGGED AT THE FINISH SURFACE FOR FUTURE WATER NEEDS. SEE ABOVE SCHEDULE FOR OUTLETS OPEN PER SHRUB SIZE.
3. (1) XBT-20-6 SERVES 1 TREE OR LARGE SHRUB 15 GALLON SIZE OR LARGER. CONTRACTOR SHALL RUN EMITTER LINES FROM ALL SIX PORTS TO LOCATIONS SHOWN ON THE "TREE EMITTER SPACING DIAGRAM DETAIL" ON SHEET L203. EMITTER LINES NOT USED SHALL BE PLUGGED AT THE FINISH SURFACE FOR FUTURE WATER NEEDS. SEE ABOVE SCHEDULE FOR OUTLETS OPEN PER SIZE TREE.

APPROVALS

TRANSPORTATION & SUPPORT SERVICES FACILITY

AGUA FRIA UNION HIGH SCHOOL DISTRICT #216

COTTON LANE, SOUTH OF THOMAS RD

GOODYEAR, AZ 85395

IRRIGATION PLAN

REVISIONS

| REV# | DATE | DESCRIPTION |
|------|-----------|---------------|
| 2 | 2/14/2022 | CITY COMMENTS |

REVIEWED BY:

DRAWN BY: CC, JM

EXPIRES 12/31/22

ORIGINAL ISSUE DATE: 09.08.2021

JOB NO: 21005

SHEET: L202

SEQUENCE #: 6 OF 8

THOMAS + CROWLEY

LANDSCAPE ARCHITECTURE
+ PLANNING
+ SITE DESIGN
+ CONSTRUCTION MANAGEMENT

1150 N. COUNTRY CLUB DRIVE, #11
MESA, AZ 85201
PH: 480.878.4708
WWW.THOMAS-CROWLEY.COM
TIC #05-#22104

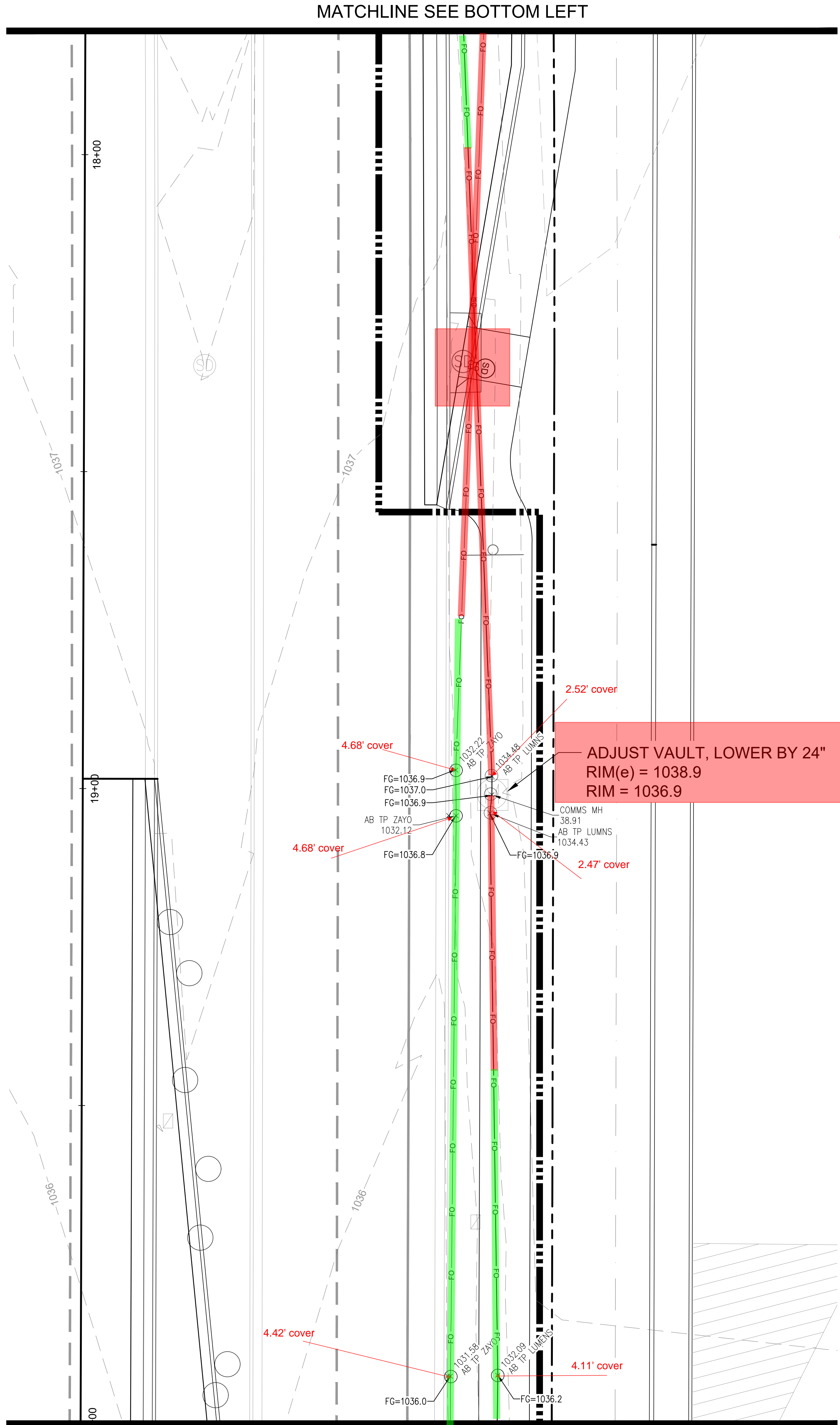
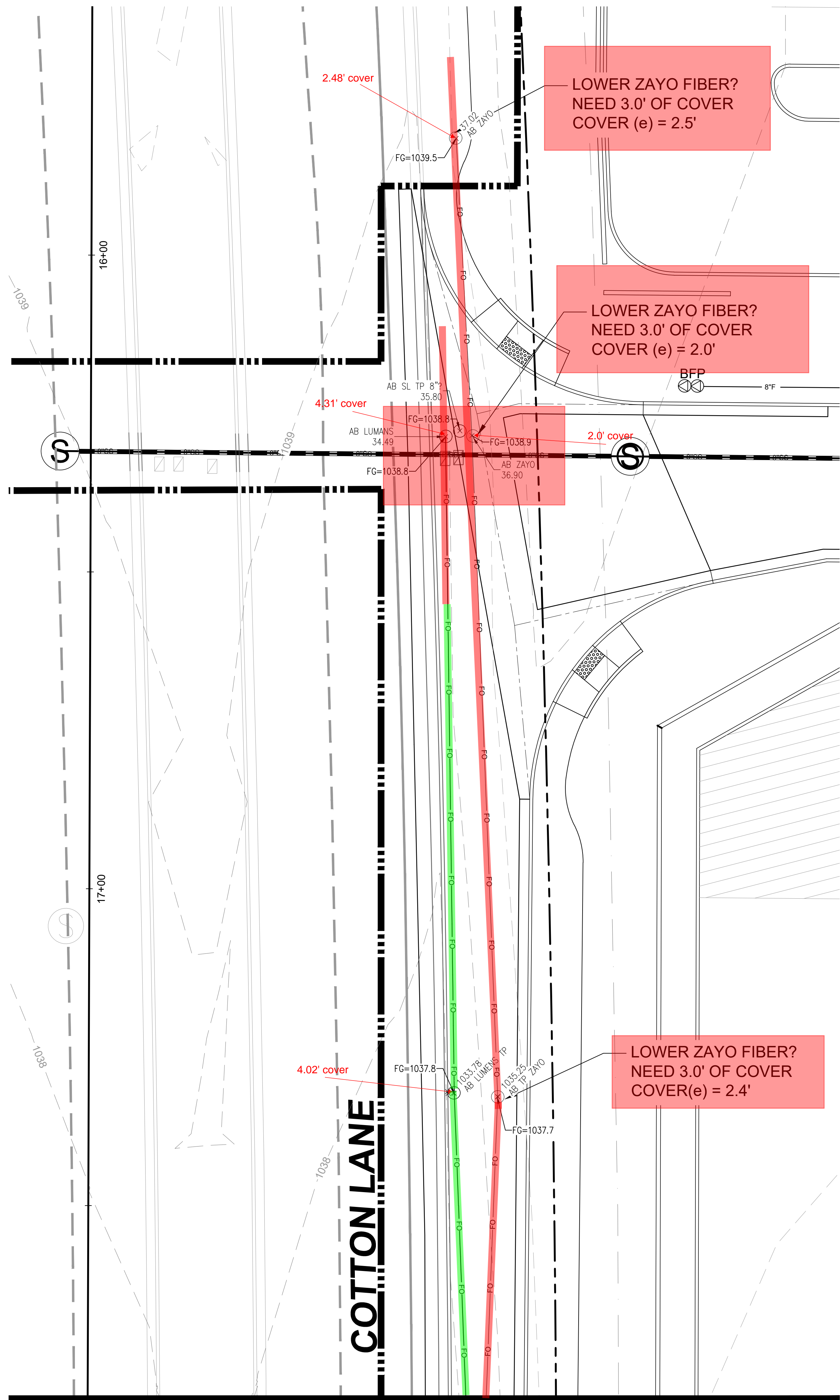
SPS+ ARCHITECTS LLP

1790 W. SAHARAO DR.
SCOTTSDALE, AZ 85258
TUCON, AZ 85745
P: 480.997.0400

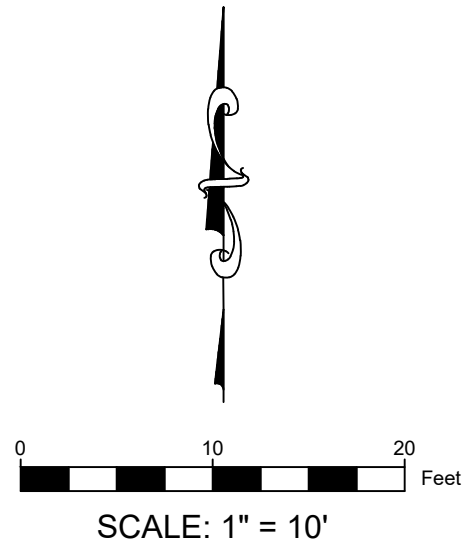
CITY OF Goodyear

Approved 05/20/22 21-6451 - AFUHS TRANS AND WAREHOUSE (22-1506)

CONSTRUCTION SET 5/27/2022



Zayo and Lumans
Conflicts



[illegible]

Technical drawing showing a fiber optic layout with various cables (FO, LUMENS) and pull boxes. The drawing includes several callouts for cover depths and adjustments:

- ADJUST PULL BOXES, LOWER BY 6"**
RIM(e) = 1034.6
RIM = 1034.1
- LOWER LUMEN FIBER? NEED 3.0' OF COVER COVER (e) = 2.9'**
- ADJUST LUMEN FIBER? CONFLICT WITH STORM DRAIN**
- This section is under the 9" concrete turn lane, maybe we can get a waiver on the cover**

Other callouts include:

- 3.314' cover
- 3.39' cover
- 3.82' cover
- 5.41' cover
- 5.35' cover
- 3.93' cover
- 3.49' cover
- 3.08' cover
- 2.87' cover
- 2.81' cover

The drawing also shows stationing (23+00, 24+00) and various cable labels (AB TP ZAYO, AB TP LUMENS, AB LUMEN L\O, AB ZAYO L\O).